

273/1
Geography
Paper 1
July/August 2022
2½ hours

BUGANDA EXAMINATIONS COUNCIL MOCKS

Uganda Certificate of Education

GEOGRAPHY

PAPER 1

2HOUR 30 MINUTES

INSTRUCTIONS TO CANDIDATES

- *This paper consists of parts **I** and **II**.*
- *Part **I** has 30 objectives type questions*
- *Part **II** has section **A** and **B**.*
- *Part **I** and section **A** of part **II** are compulsory.*
- *Answer only **one** question from section **B** of part **II***
- *Answers to all questions must be written in the answer booklet(s)*
- *Any additional question(s) answered will not be marked.*

(There are 30 compulsory questions. Each question carries one mark. Write the letter corresponding to the correct answer for each question.)

- © Buganda Examination Council Mocks 2022

10. Nomadic pastoralism is practiced in the Masai land mainly because of
- | | |
|-------------------------|------------------------|
| A. low quality pastures | B. pests and diseases |
| C. large tracts of land | D. unreliable rainfall |
11. Cottage industries have been developed in East Africa because they
- | | |
|--|------------|
| 1. are not capital intensive | |
| 2. use locally available raw materials | |
| 3. encourage urban-rural migration | |
| 4. earn foreign exchange | |
| A. 1 and 3 | B. 2 and 3 |
| C. 1 and 2 | D. 2 and 4 |
12. Which one of the following is the main factor attracting migrants to urban areas of East Africa?
- | |
|---------------------------------|
| A. employment opportunities |
| B. good housing facilities |
| C. variety of social amenities |
| D. land shortage in rural areas |
13. The weight of air pushing on the earth's surface is called
- | | |
|------------------|-------------------------|
| A. insolation | B. atmospheric pressure |
| C. precipitation | D. relative humidity |
14. A river transports clay particles by
- | | |
|--------------|---------------|
| A. traction | B. solution |
| C. siltation | D. suspension |
15. A volcanic plug is formed when
- | |
|-----------------------------------|
| A. secondary cone is exposed |
| B. lava spreads over an area |
| C. batholiths is exposed |
| D. molten lava solidifies in vent |
16. Which of the following are advantages of pipeline transport?
- | | |
|-----------------------------------|------------|
| 1. low unit cost | |
| 2. ability to cover long distance | |
| 3. flexibility | |
| 4. reliability | |
| A. 1 and 4 | B. 2 and 3 |
| C. 1 and 2 | D. 3 and 4 |
17. The main reason for setting up irrigation schemes in Uganda is to
- | |
|-------------------------------------|
| A. settle excess population |
| B. create more land for agriculture |
| C. open up remote areas |
| D. provide employment |

18. Which of the following areas in East experiences a high diurnal range of temperature?
- | | |
|-------------------------|---------------------------|
| A. North-Eastern Kenya | B. South-Western Kenya |
| C. South-Western Uganda | D. North-Western Tanzania |
19. Minerals of Tororo are obtained from
- | | |
|----------------------|----------------------|
| A. crystalline rocks | B. sedimentary rocks |
| C. sandstones | D. volcanic rocks |
20. Wildlife in East Africa has been mainly conserved in gazetted areas in order to
- | |
|--|
| A. protect valuable plants and animals |
| B. promote scientific study |
| C. attract tourists |
| D. earn foreign exchange |
21. Which of the following glacial features in East Africa are results of deposition?
- | | |
|-----------|----------------------|
| A. cirque | B. terminal moraines |
| C. arêtes | D. pyramidal peaks |
22. The following are mechanical weathering processing except?
- | | |
|----------------|-------------------------|
| A. exfoliation | B. block disintegration |
| C. solution | D. frost shattering |
23. Equatorial forests in East Africa have been mainly cleared for
- | | |
|----------------------|----------------------|
| A. Agriculture | B. Settlement |
| C. Road construction | D. Industrialization |
24. Central Tanzania is sparsely populated mainly because of
- | | |
|-----------------------------|-------------------------------------|
| A. infertile soils | B. existence of woodland vegetation |
| C. presence of Tsetse flies | D. unreliable rainfall |
25. Tarns on the glaciated mountains of East Africa have been used mainly for
- | | |
|-----------------|------------|
| A. fishing | B. tourism |
| C. water supply | D. mining |
26. Which of the following industries in East Africa is agro-based?
- | | |
|---------------------------|--------------------------|
| A. clothings and textiles | B. electronics |
| C. pharmaceuticals | D. plastic manufacturing |
27. The major problem limiting trade among the East African countries is they
- | |
|--|
| A. have poorly developed transport network |
| B. levy high taxes on goods |
| C. produce similar goods |
| D. lack cooperation between countries. |

28. Which of the following mountains in East Africa is a block mountain?
 A. Elgon B. Moroto
 C. Muhavura D. Rwenzori
29. The traditional fishing method used in the swampy areas of East Africa is
 A. spearing B. beach seining
 C. trawling D. long lining
30. The process by which minerals are transported to the lower layers of the soil profile is known as
 A. erosion B. evaporation
 C. solution D. leaching

PART II

MAP WORK, PHOTOGRAPH INTERPRETATION, FIELDWORK AND EAST AFRICA

Answer *four* questions from part II including questions 1, 2 and 3 which are compulsory.

SECTION A

1. COMPULSORY QUESTION: MAPWORK (20 MARKS)

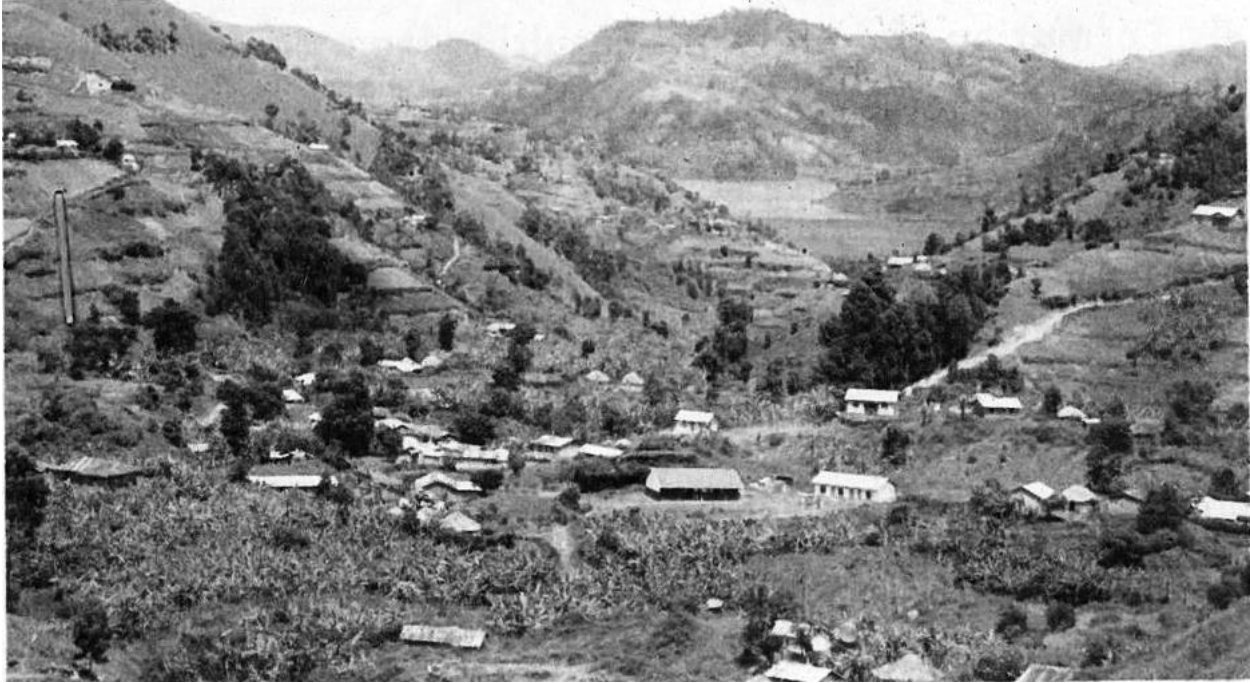
Answer all parts of this question.

Study the EAST AFRICA 1 :50,000 (UGANDA) PAKWACH map extract part of sheet 29/2 series Y&32 Edition 2 – U.S.D and answer the questions that follow:-

- (a)(i) State the grid reference of the Borehole at Paroketto (01mark)
 (ii) Name the man-made feature found at grid reference 287757 (01 mark)
- (b)(i) Calculate the area covered by Albert Nile. (02marks)
 (ii) Measure the distance of the dry weather road from the road junction in (grid square 2972) to Panyimur. (02marks)
- (c) Draw a sketch map between Easting 20 and 30 and along Northing 60 and 75 and on it mark
 (i) Albert Nile
 (ii) Seasonal swamps
 (iii) Dry weather roads
 (iv) Loose surface road (07 marks)
- (d)(i) Describe the relationship between drainage and settlement in the area shown on the map. (04marks)
 (ii) Giving evidence from the map extract, identify any 3 economic activities carried out in the area shown on the map. (03marks)

2. **COMPULSORY: PHOTOGRAPHY INTERPRETATION QUESTION**

Study the photograph provided below and answer the question that follow



- (a) Giving reasons for your answer identify the type of photograph. (02marks)
- (b) Draw a landscape sketch of the area shown in the photograph and on it mark and name;
 - (i) two relief features
 - (ii) water body
 - (iii) three land-use types (06marks)
- (c) Outline the problems faced by the people living in the area shown in the photograph. (05marks)
- (d) Giving reasons for your answer, suggest an area in East Africa where the photograph could have been taken from. (02 marks)

3. **COMPULSORY QUESTION: FIELDWORK** (15 MARKS)

For any one fieldwork study you have conducted either as a group or individual

- (a) State the;
 - (i) Topic (02marks)
 - (ii) Objectives of the study (02marks)

- (b) Draw a cross-section of the area studied during the field work and on it mark and label
 (i) Physical features
 (ii) Man-made features (05marks)
- (c) Explain how the fieldwork study enabled you to understand the geography of the area of study. (04marks)
- (d) Outline the activities you carried out to conclude your field work. (02 marks)

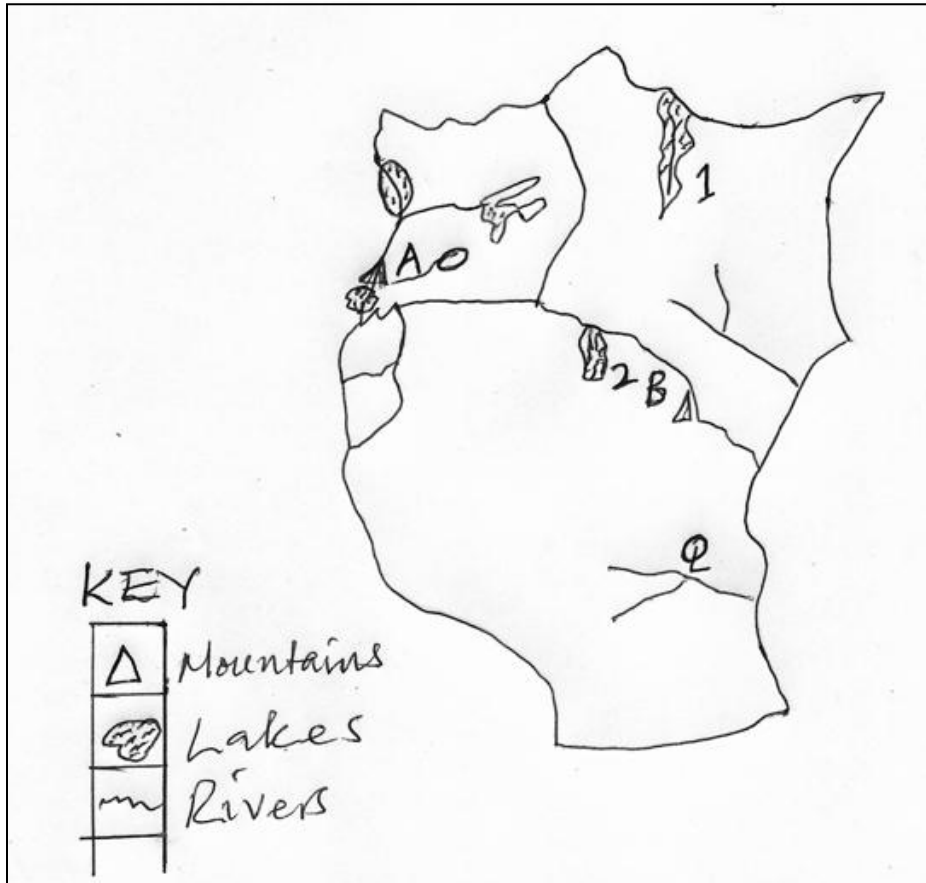
SECTION B: EAST AFRICA (20 MARKS)

- 4(a) Draw a sketch map of East Africa and on it mark and label;
 (i) Lakes : Victoria, Tanyanyika, Magadi
 (ii) Rivers: Kafu, Athi and Rufigi (07marks)
- (b) Describe the processes which led to the formation of any lake in (a) (i) above. (04marks)
- (c) Explain the economic benefits of lakes in East Africa. (06marks)
- (d) Outline the problems facing the use of water resources in East Africa. (03marks)
- 5(a) Distinguish between Marine water Fisheries and Fresh water Fisheries. (02marks)
- (b) Name any two;
 (i) Marine water fish species (02marks)
 (ii) Fresh water fish species (02marks)
 Caught in East Africa
- (c) Describe the conditions that have favoured the development of the fishing industry in East Africa. (06marks)
- (d)(i) Explain the benefits of the fishing industry to the economy of any one country in East Africa. (06marks)
 (ii) Outline the measures being taken to improve the fishing industry in East Africa. (02marks)
6. Study the table below showing the number of tourists into Kenya (1972-80) and answer the questions that follow.

Year	Number of Tourists
1972	350,000
1974	380,000
1976	430,000
1978	450,000
1980	470,000

Source: Adapted from Waugh D. The World (P.120)

- (a)(i) Draw a line graph to show the information given in the table. (07marks)
(ii) Describe the trend in the number of tourist as shown in the table and graph in a(i) above. (03marks)
(b) Describe the factors which have attracted tourists to Kenya. (04marks)
(c) Explain the importance of tourist industry to Kenya. (04marks)
(d) Outline the problems facing the tourist industry in Kenya. (02marks)
7. Study figure 1: Sketch map of East provided and answer the questions that follow



- (a) Name the;
(i) Mountains marked A and B
(ii) Lakes 1 and 2
(iii) Rivers P and Q (06marks)
(b) Describe the process in the formation of river Deltas in East Africa. (05marks)
(c) Explain the benefits of river deltas to the people of East Africa (06marks)
(d) Outline the problems which are faced by the people living along river valleys in East Africa. (03 marks)

END